



## Visual Abstract

# Lean body mass predicts dose-limiting toxicity

in patients with colorectal cancer treated with FOLFOX

### Summary



Lean body mass (LBM) evaluated on diagnostic CT-scans is a strong predictor of early dose limiting toxicity (DLT) in patients treated with FOLFOX and could explain gender specific differences in toxicity.

### Study design



Cohort study



Retrospective  
2015-2019



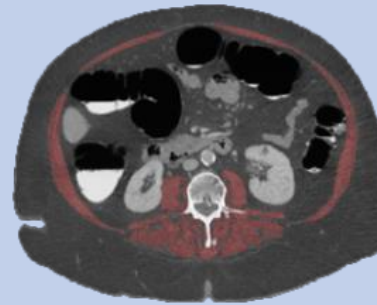
Department of Oncology  
Aalborg University Hospital

### Population

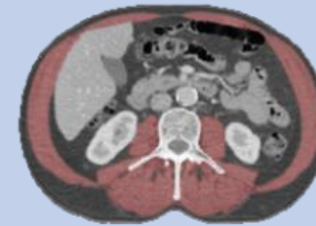
n=97 (♀=49) receiving adjuvant treatment for stage III cancer.

### Outcomes

Gender specific differences in bodycomposition

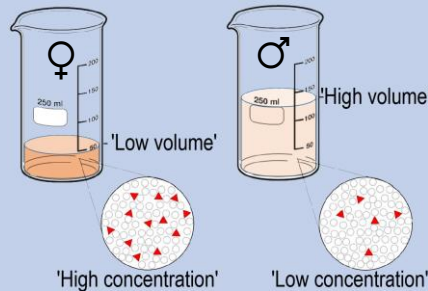


♀  $\bar{x}_{LBM}$  = 41,2 kg



♂  $\bar{x}_{LBM}$  = 59,3 kg p<0,0001

Leads to significant differences in drug exposure



DLT events

♀ = 34 OR = 3,46  
♂ = 15 p = 0,003

Causing higher risk of DLT among women

♀  $\bar{x}_{FOLFOX/LBM}$  = 126,66 mg/kg ♂  $\bar{x}_{FOLFOX/LBM}$  = 96,53 mg/kg p<0,0001